

BOAT COMMERCIAL INN, STAMFORD – A POEM FROM 1865

On the Sea of Adventure
Again I'm afloat!
Once more have embarked,
In my favourite Boat!

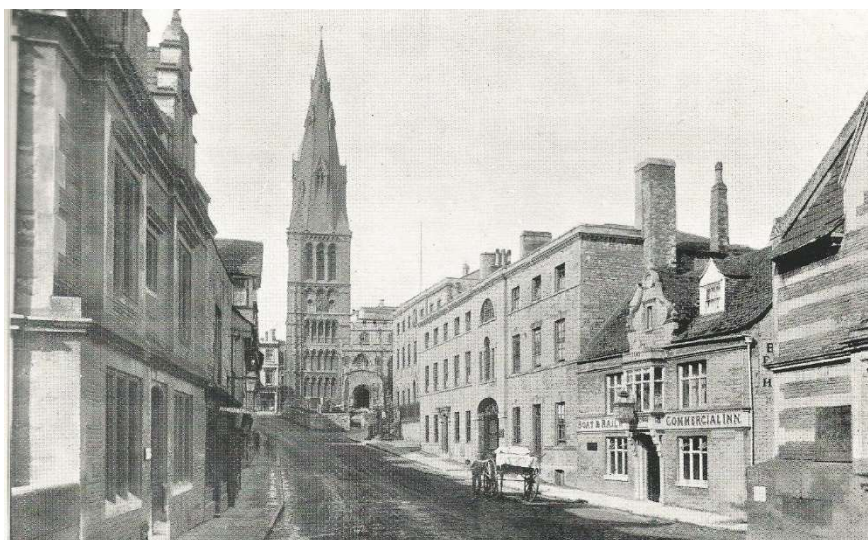
My Spirits and Wines
Are the best of their kind;
My Home-brew'd is such
None better you'll find.

The best accommodation
That can be had in the town,
Must give great satisfaction,
And not cause a frown.

Kind friends and the public
I ask for your trade,
None will treat you much better
Than your Servant, JOHN WADE

Source

Stamford Mercury (Friday) December 22nd 1865 p1/c4



Notes

The Boat and Railway public house at the bottom of St Mary's Hill on the corner with Wharf Road was formerly the Boat Commercial Inn, a name board closely linked to the adjacent river trade. In December 1865, it re-opened under the stewardship of John Wade a former proprietor. And to mark and publicise the event John Wade inserted the above doggerel poem in the Stamford Mercury. In 1865 its address was commonly described as Bridge-foot on St Mary's Hill. The pub was acquired by local brewery, Melbourn Brothers, in 1911 by which time the & Railway had been added. It finally closed in 1962.

Chris Hunt

December 2025